

WATER TREATMENT SYSTEMS



TECH SERIES HIGH FLOW RESIDENTIAL WATER SOFTENERS (1.25 INCH FULLY PORTED VALVING)



Safe Water Technologies' Residential Water Treatment Systems utilize ProSoft™ Premium resin. This is the same resin SWT used to treat the water servicing the Capitol Building in Washington DC! Also available is the newest in computer monitoring technology for maximized efficiency. Plus, these systems now feature SWT's new Cyclonic Distributor System™ to provide full bed contact, less channeling, and superior backwashing (see reverse side).

- **100% corrosion-free** system with attractive all black components
- **Energy efficient** controller uses less than \$5.00 of electricity per year
- Never lose system memory and timer clock to power failure — **no battery required for backup!**
- **Automatic variable reserve** based on water usage history
- All units include **upper screen, brine safety float, brine well overflow connection, brine tank with injection molded lid, brine line tube and connectors**
- **10 year warranty** on tank, **5 year warranty** on valve
- All components **NSF listed**
- All **international voltages** available

Computer Metered Systems with Professional Level Programming

Part Number	Tank Size Inches	Softening Capacity * Grains / Lbs. of Salt			System Service Flow Rate		Max. Valve Flow Rate @ 15 psid	Standard ** Connection Size
		6 lbs / cu.ft.	10 lbs / cu.ft.	15 lbs / cu.ft.	Standard	Peak		
WSCCDM125-100	9 x 48	23,800	30,200	34,400	5 GPM	10 GPM	34 GPM	1.25 inch Brass Sweat
WSCCDM125-150	10 x 54	35,700	45,300	51,600	7.5 GPM	15 GPM	34 GPM	1.25 inch Brass Sweat
WSCCDM125-200	12 x 52	47,600	60,400	68,800	10 GPM	20 GPM	34 GPM	1.25 inch Brass Sweat
WSCCDM125-250	13 x 54	59,500	75,500	86,000	12.5 GPM	25 GPM	34 GPM	1.25 inch Brass Sweat
WSCCDM125-300	13 x 65	71,400	90,600	103,200	15 GPM	30 GPM	34 GPM	1.25 inch Brass Sweat
WSCCDM125-350	14 x 65	83,300	105,700	120,400	17.5 GPM	34 GPM	34 GPM	1.25 inch Brass Sweat
WSCCDM125-400	16 x 65	95,200	120,800	137,600	20 GPM	34 GPM	34 GPM	1.25 inch Brass Sweat
WSCCDM125-500	18 x 65	119,000	151,000	172,000	25 GPM	34 GPM	34 GPM	1.25 inch Brass Sweat
WSCCDM125-700	21 x 62	166,600	211,400	240,800	34 GPM	34 GPM	34 GPM	1.25 inch Brass Sweat

* Operating capacities based on influent of 400 ppm as CaCO₃ with a ratio of 2 parts calcium to 1 part magnesium at 2.0 gpm/cu.ft. flow rate. Capacities include 10% safety factor.

** Standard connection fitting is 1.25 & 1.5 inch Lead-Free Brass Sweat Assembly. See next page for other available options.

Operating Pressure: 20 to 120 psi

Operating Water Temperature: 35 to 100°F

Valve Service Cv = 8.8

WATER TREATMENT SYSTEMS



TECH SERIES HIGH FLOW RESIDENTIAL WATER SOFTENERS (1.25 INCH FULLY PORTED VALVING)

OPTIONAL CHROME TANK JACKET



No unsightly exposed tank neck

Durable textured black cover

Made of high-impact polystyrene for exceptional strength and durability

Fully insulated to add protection to the tank and eliminate condensation

Attractive high gloss chrome finish

Light weight and easy to install

Resists UV degradation

Options

TANK JACKETS

Chrome Tank Jacket, 8 x 44 inch
(P/N RG-TJ0844EC)

Chrome Tank Jacket, 9 x 48 inch
(P/N RG-TJ0948EC)

Chrome Tank Jacket, 10 x 54 inch
(P/N RG-TJ1054EC)

Chrome Tank Jacket, 12 x 52 inch
(P/N RG-TJ1252EC)

BYPASS VALVE

Bypass Valve (P/N LC-V3006)

BRINE TANKS SUBSTITUTIONS (BY REQUEST)

Brine Tank, 18 x 33 inch, Black

Brine Tank, 18 x 40 inch, Black

FITTINGS SUBSTITUTIONS (BY REQUEST)

1 inch PVC Male NPT Elbow Assembly

3/4 x 1 inch PVC Solvent Elbow Assembly

1 inch Brass Sweat Assembly LF

3/4 inch Brass Sweat Assembly LF

1.25 inch Plastic Male NPT Assembly

1 inch Plastic Male BSPT Assembly

1.25 & 1.5 inch PVC Solvent Assembly

1.25 inch Plastic Male BSPT Assembly

3/4 inch SharkBite® Assembly

1 inch SharkBite® Assembly

3/4 inch Plastic Male BSPT Assembly

3/4 inch John Guest® Elbow Assembly

1 inch PVC Male BSPT Elbow Assembly

Vertical 90 degree Adapter Assembly

Grid plates and alternate packaging for individual shipment are also available. Call for details.

Notes:

A black 15 x 17 x 33 inch brine tank with injection molded lid is standard. Substitutions are available on request. See "Options" above.

1.25 & 1.5 inch lead-free brass sweat installation fittings are standard. Substitutions available on request. See "Options" above.

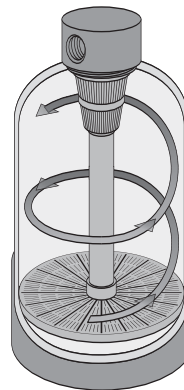
All units are supplied with ProSoft™ Premium 8% crosslink resin. Resin substitutions are available on request at extra cost.

Resin ratings are as follows:

	CROSSLINK	CaCO ₃ CAP @ 15 lbs./cu.ft.
ProSoft™ Gold	7%	32,000
ProSoft™ Premium	8%	33,000
ProSoft™ Fine Mesh	8%	34,600
ProSoft™ Heavy Duty	10%	35,600
ProSoft™ High Porosity	12%	28,000

In basic terms, crosslinkage refers to the resin beads' physical strength or ability to withstand chemical attack from chlorine, resin bed cleaners, and caustics used in DI applications.

SWT Treatment Systems Now Include CYCLONIC DISTRIBUTOR SYSTEM™



- Up to 30% less backwash flow rate is required...conserving water for the customer.
- Distributor plate is designed for more than 6,500 lbs load capacity.
- Reduces system pressure loss while increasing flow and efficiency through the bed.
- Available for 7, 8, 9, 10, 12, 13, 14, and 16 inch systems.

This environmentally friendly design offers the most efficient service and backwashing characteristics available — reducing the amount of water to drain in backwash, while increasing the overall filtration capacity of a system.