

# WATER TREATMENT SYSTEMS



## LOGIX SERIES RESIDENTIAL WATER SOFTENERS (1 INCH FULLY PORTED VALVING)



Safe Water Technologies' Residential Water Treatment Systems utilize ProSoft™ Premium resin. This is the same resin SWT used to treat the water servicing the Capitol Building in Washington DC! Also available is the newest in computer monitoring technology for maximized efficiency. Plus, these systems now feature SWT's revolutionary Cyclonic Distributor System™ to provide full bed contact, less channeling, and superior backwashing (see next page).

- **100% corrosion free** system with attractive all black components
- **Energy efficient** controller uses less than \$5.00 of electricity per year
- Never lose system memory and timer clock to power failure — **no battery required for backup!**
- Computerized controller **monitors and adjusts to actual water usage**
- All units include **upper screen, brine pickup with air check, brine well overflow connection, brine tank with injection molded lid, brine line tube and connectors**
- **10 year warranty** on tank, **5 year warranty** on valve
- All components **NSF listed**
- All **international voltages** available

Part Number	Tank Size Inches	System Service Flow Rate	Softening Capacity (Grains / Lbs. of Salt) *			Max. Valve Flow Rate @ 15 psid	Standard Connection Size
			6 lbs / cu.ft.	10 lbs / cu.ft.	15 lbs / cu.ft.		

### Computer Metered Systems with Professional Programming and Water Use Averaging

WSC761P2-75	8 x 44	Up to 5 GPM	17,850	22,650	25,800	25 GPM	1 inch Copper Tube
WSC761P2-10	9 x 48	Up to 7 GPM	23,800	30,200	34,400	25 GPM	1 inch Copper Tube
WSC761P2-15	10 x 54	Up to 10 GPM	35,700	45,300	51,600	25 GPM	1 inch Copper Tube
WSC761P2-20	12 x 52	Up to 12 GPM	47,600	60,400	68,800	25 GPM	1 inch Copper Tube

### Electronic Time Clock Systems with Semi-Programmable Regeneration

WSC741P-75	8 x 44	Up to 5 GPM	17,850	22,650	25,800	25 GPM	1 inch Copper Tube
WSC741P-10	9 x 48	Up to 7 GPM	23,800	30,200	34,400	25 GPM	1 inch Copper Tube
WSC741P-15	10 x 54	Up to 10 GPM	35,700	45,300	51,600	25 GPM	1 inch Copper Tube
WSC741P-20	12 x 52	Up to 12 GPM	47,600	60,400	68,800	25 GPM	1 inch Copper Tube

### Computer Metered Systems with Semi-Programmable Regeneration and Water Use Averaging

Part Number	Tank Size Inches	System Service Flow Rate	Softening Capacity (Grains / Lbs. of Salt) *			Max. Valve Flow Rate @ 15 psid	Standard Connection Size
			Low 3.3 lbs / cu.ft.	Standard 9 lbs / cu.ft.	High 15 lbs / cu.ft.		
WSC761P-75	8 x 44	Up to 5 GPM	11,000	19,000	23,000	25 GPM	1 inch Copper Tube
WSC761P-10	9 x 48	Up to 7 GPM	15,000	25,000	30,000	25 GPM	1 inch Copper Tube
WSC761P-15	10 x 54	Up to 10 GPM	22,000	38,000	45,000	25 GPM	1 inch Copper Tube
WSC761P-20	12 x 52	Up to 12 GPM	28,000	50,000	60,000	25 GPM	1 inch Copper Tube

\* Operating capacities based on influent of 400 ppm as CaCO<sub>3</sub> with a ratio of 2 parts calcium to 1 part magnesium at 2.0 gpm/cu.ft. flow rate. Capacities include 10% safety factor.

**Operating Pressure:** 20 to 120 psi    **Operating Water Temperature:** 35 to 100°F

# WATER TREATMENT SYSTEMS



## LOGIX SERIES RESIDENTIAL WATER SOFTENERS (1 INCH FULLY PORTED VALVING)

### OPTIONAL CHROME TANK JACKET



No unsightly exposed tank neck

Durable textured black cover

Made of high-impact polystyrene for exceptional strength and durability

Fully insulated to add protection to the tank and eliminate condensation

Attractive high gloss chrome finish

Light weight and easy to install

Resists UV degradation

### Options

Part Number	Description
RG-TJ0844EC	Chrome Tank Jacket, 8 x 44 inch
RG-TJ0948EC	Chrome Tank Jacket, 9 x 48 inch
RG-TJ1054EC	Chrome Tank Jacket, 10 x 54 inch
RG-TJ1252EC	Chrome Tank Jacket, 12 x 52 inch
UA/BV1256	Bypass Valve
UA-1244336	Chlorine Generator — Brine Cycle
UA-1268102	Low Salt Indicator — Brine Cycle
By Request	Substitute Brine Tank, 18 x 33 inch, Black
By Request	Substitute Brine Tank, 18 x 40 inch, Black
By Request	Substitute 0.75 Copper Fittings
By Request	Substitute 0.75 or 1 inch PVC Socket Fittings
By Request	Substitute 0.75 or 1 inch PVC NPT Fittings
By Request	Substitute 0.75 or 1 inch Brass NPT Fittings

Grid plates, safety floats in brine tank, and alternate packaging for individual shipment are also available. Call for details.

### Notes:

A black 15 x 17 x 33 inch brine tank with injection molded lid is standard. Substitutions are available on request. See "Options" above.

1 inch copper tube installation fittings are standard. Substitutions are available on request. See "Options" above.

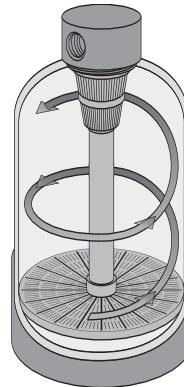
All units are supplied with ProSoft™ Premium 8% crosslink resin. Resin substitutions are available on request at extra cost.

Resin ratings are as follows:

	CROSSLINK	CaCO <sub>3</sub> CAP @ 15 lbs./cu.ft.
ProSoft™ Gold	7%	32,000
ProSoft™ Premium	8%	33,000
ProSoft™ Fine Mesh	8%	34,600
ProSoft™ Heavy Duty	10%	35,600
ProSoft™ High Porosity	12%	28,000

In basic terms, crosslinkage refers to the resin beads' physical strength or ability to withstand chemical attack from chlorine, resin bed cleaners, and caustics used in DI applications.

### SWT Treatment Systems Now Include CYCLONIC DISTRIBUTOR SYSTEM™



- Up to 30% less backwash flow rate is required...conserving water for the customer.
- Distributor plate is designed for more than 6,500 lbs load capacity.
- Reduces system pressure loss while increasing flow and efficiency through the bed.
- Available for 7, 8, 9, 10, 12, 13, 14, and 16 inch systems.

This environmentally friendly design offers the most efficient service and backwashing characteristics available — reducing the amount of water to drain in backwash, while increasing the overall filtration capacity of a system.