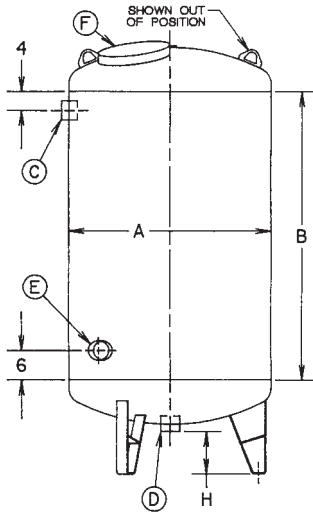


# STEEL TANKS



## LINED AND PRIMED STEEL TANKS



Safe Water Technologies' Steel Tanks are UL classified for drinking water system components in accordance with Standard ANSI/NSF 61-(1992) 7N44. They come fully lined and primed to meet ANSI/NSF Standard 61 for coatings.

All tanks have two large top and bottom access openings to simplify distributor system assembly. In addition, all standard tanks feature two FPT x FPT full couplings located at the top-side wall and center-bottom of the tanks. All tanks larger than 36 inches in diameter have a manway with cover, and a top-center spud to bleed air. These tanks are durable, rust-proofed, and built to last.

- Meets all requirements for both FDA and US Department of Agriculture
- NSF Listed
- 100 PSI maximum operating pressure
- Standardized equipment means faster shipping
- Custom designs available (see back page)

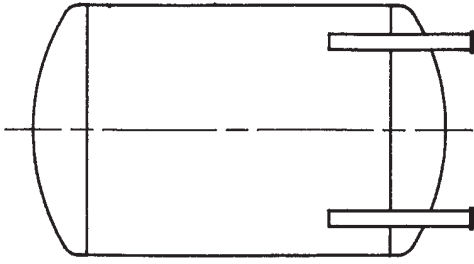
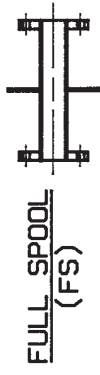
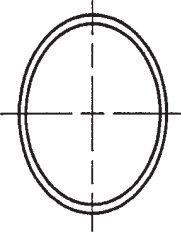
Part Number	Tank Size Inches (Dim A x B)	Total Height Inches	Total Volume Cu. Ft.	Top Manway Inches (Dim F)	Top-Side, and Bottom-Center Openings (Dim C & D)	Bottom-Side Access Inches (Dim E)	Approx. Weight Lbs.
UQ-2054L	20 x 54	68	10	4 x 6	2 inch Full Coupling	4 x 6	170
UQ-2060L	20 x 60	74	11	4 x 6	2 inch Full Coupling	4 x 6	180
UQ-2072L	20 x 72	86	14	4 x 6	2 inch Full Coupling	4 x 6	204
UQ-2454L	24 x 54	69	15	4 x 6	2 inch Full Coupling	4 x 6	184
UQ-2460L	24 x 60	75	17	4 x 6	2 inch Full Coupling	4 x 6	197
UQ-2472L	24 x 72	87	20	4 x 6	2 inch Full Coupling	4 x 6	340
UQ-3054L	30 x 54	73	25	4 x 6	2 inch Full Coupling	4 x 6	278
UQ-3060L	30 x 60	79	27	4 x 6	2 inch Full Coupling	4 x 6	298
UQ-3072L	30 x 72	91	32	4 x 6	2 inch Full Coupling	4 x 6	467
UQ-3660L	36 x 60	84	40	11 x 15	3 inch Full Coupling	4 x 6	499
UQ-3672L	36 x 72	96	47	11 x 15	3 inch Full Coupling	4 x 6	672
UQ-4260L	42 x 60	88	55	11 x 15	3 inch Full Coupling	4 x 6	768
UQ-4272L	42 x 72	100	65	11 x 15	3 inch Full Coupling	4 x 6	852
UQ-4860L	48 x 60	95	74	12 x 16	4 inch Full Coupling	4 x 6	1062
UQ-4872L	48 x 72	107	86	12 x 16	4 inch Full Coupling	4 x 6	1159
UQ-5460L	54 x 60	97	95	12 x 16	4 inch Full Coupling	4 x 6	1235
UQ-5472L	54 x 72	109	111	12 x 16	4 inch Full Coupling	4 x 6	1342
UQ-6060L	60 x 60	103	119	12 x 16	4 inch Full Coupling	4 x 6	1723
UQ-6072L	60 x 72	115	139	12 x 16	4 inch Full Coupling	4 x 6	1884
UQ-6660L	66 x 60	105	146	12 x 16	4 inch Full Coupling	4 x 6	2075
UQ-6672L	66 x 72	117	170	12 x 16	4 inch Full Coupling	4 x 6	2252
UQ-7260L	72 x 60	107	177	12 x 16	4 inch Full Coupling	4 x 6	2346
UQ-7272L	72 x 72	119	206	12 x 16	4 inch Full Coupling	4 x 6	2537

The listed tanks are usually available in 7 to 10 days. Flanges and other sized openings also are available (see ordering form on reverse side). Custom tanks take 4 to 6 weeks. Galvanized and stainless tanks also available. Lifting lugs are standard on all tanks.

# STEEL TANKS

TANK SIZE  
 DIAMETER \_\_\_\_\_  
 SIDE SHELL HEIGHT \_\_\_\_\_  
 OVER ALL HEIGHT IF REQ'D \_\_\_\_\_  
WORKING PRESSURE  
 100 PSI \_\_\_\_\_  
 125 PSI \_\_\_\_\_  
 150 PSI \_\_\_\_\_  
 OTHER \_\_\_\_\_ PSI  
CODE REQUIREMENTS  
 NON CODE \_\_\_\_\_  
 CODE SPECS (NOT STAMPED) \_\_\_\_\_  
TANK LINING (INTERIOR)  
 STANDARD EPOXY \_\_\_\_\_ MILS  
 SPECIAL EPOXY \_\_\_\_\_ MILS  
 GALVANIZED \_\_\_\_\_  
 RUBBER \_\_\_\_\_  
 BAKED PHENOLIC \_\_\_\_\_  
 VINYL ESTER \_\_\_\_\_  
 OTHER \_\_\_\_\_  
TANK COATING (EXTERIOR)  
 GALVANIZED \_\_\_\_\_  
 STANDARD PRIME COAT \_\_\_\_\_  
 OTHER \_\_\_\_\_  
TANK LEGS  
 ANGLE LEGS \_\_\_\_\_  
 STRAP LEGS \_\_\_\_\_  
 BEAM LEGS \_\_\_\_\_  
 JACK PADS \_\_\_\_\_  
 PIPE LEGS \_\_\_\_\_  
 RING BASE \_\_\_\_\_  
MOUNTING CLIPS  
 INTERIOR - # OF CLIPS \_\_\_\_\_  
 EXTERIOR - # OF CLIPS \_\_\_\_\_  
SPECIAL REQUIREMENTS  
 LIFT LUGS \_\_\_\_\_  
 FALSE BOTTOM \_\_\_\_\_  
 DISTRIBUTOR PLATE \_\_\_\_\_  
 HYDROSTATIC TEST \_\_\_\_\_  
 HIGH TEMP \_\_\_\_\_ °F  
 STAINLESS - TYPE \_\_\_\_\_

COMPANY: \_\_\_\_\_  
 CONTACT: \_\_\_\_\_  
 PHONE: \_\_\_\_\_  
 FAX: \_\_\_\_\_  
 QUANTITY \_\_\_\_\_  
 LEFT HAND/RIGHT HAND? \_\_\_\_\_



PRICE: \_\_\_\_\_ EACH  
 WEIGHT: \_\_\_\_\_ LBS/EACH  
 CAN SHIP IN \_\_\_\_\_ WEEKS

SCHEDULE OF OPENINGS		
MARK	SIZE	SERVICE
A		
B		
C		
D		
E		
F		
G		
H		

**NOTES:**  
 1. Ø20" THRU Ø42" TANKS WILL HAVE 3 LEGS. Ø48" THRU Ø120" WILL HAVE 4 LEGS. 6 JACK PADS ARE NEEDED ON Ø86" THRU Ø120". STRAP LEGS CAN BE USED THRU Ø42". TYPE OF LEGS MUST BE SPECIFIED.  
 2. FILL IN THE SCHEDULE OF OPENINGS AND MARK THEIR APPROXIMATE LOCATION ON THE DRAWING. NOTE ANY STAINLESS OPENINGS. ALL REQUIRED SPECIFICATIONS MUST BE MARKED TO INSURE A PROPER QUOTATION.